

# WESTON TRAP CLUB



## WESTON TRAP 2021 ATA REGISTERED TARGET SEASON

**A P R I L 2 4 T H & 2 5 T H**  
**M A Y 8 T H & 9 T H**  
**J U N E 1 2 T H & 1 3 T H**

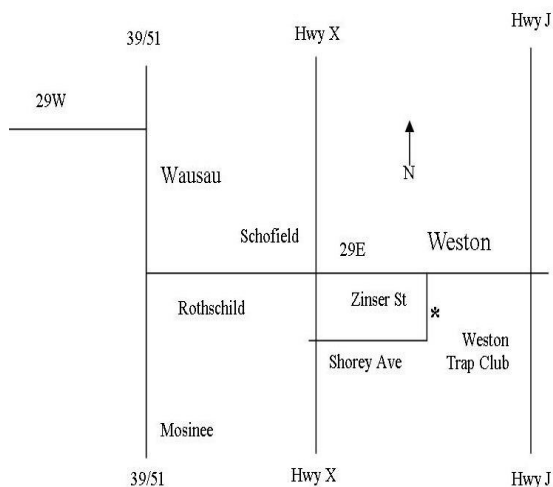
CASH TROPHIES TO CHAMPION (16 & Hdcp), CLASS, YDRG GROUP, LADY, JUNIOR, YOUTH PROGRAM, VETERAN, HOA & HAA (AS APPLIES) IN EACH EVENT.

JUNIORS SHOOT FOR \$16 (+ daily fees) IF DECLARED FOR JUNIOR OR YOUTH PROGRAM TROPHY ONLY. SEE REVERSE FOR ATA PROGRAM

Contact:: ATA co-chairs Craig (Woody) Wojicechowski 715-573-2702 or Russ Slaby 715-571-3443 for more information.

Located East of Wausau along State Hwy 29.

9105 Zinser Street  
Weston, WI 54476  
715-355-4888

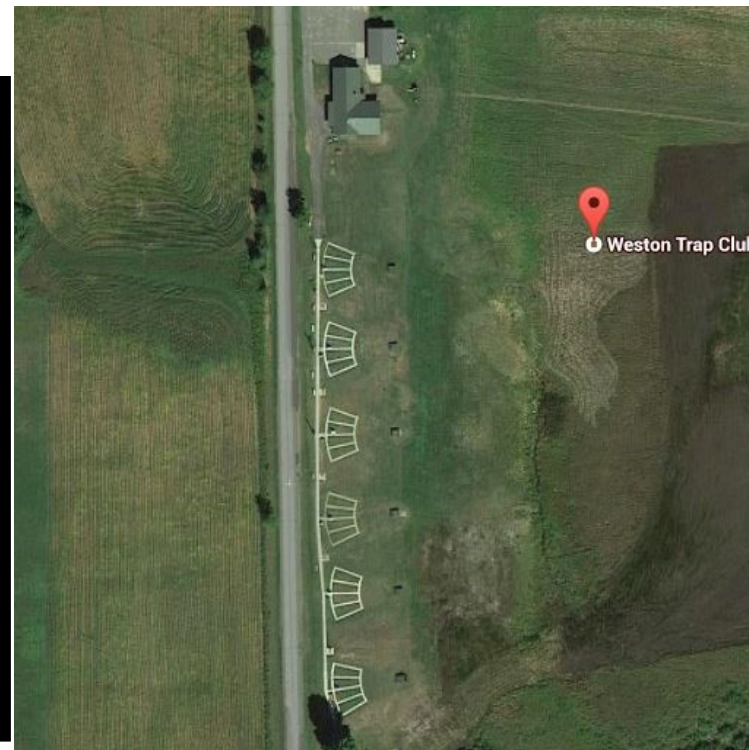


### Registration Certificate:

This Certifies that the Weston Trap Club is authorized to hold registered shoots on these dates. ATA rules will govern and scores will be recorded in official ATA records.

- ◆ **AIR CONDITIONING**
- ◆ **ELECTRIC OUTLETS / SHOWERS**
- ◆ **FOOD**
- ◆ **BEVERAGES**
- ◆ **CASH TROPHIES**

Exit State Hwy 29 at County Hwy J.  
Turn South on Hwy J. After 1/8 Mi.  
Turn Right and Drive West on Weston Avenue 1 Mi. Turn South on Zinser St.  
**One Mile South to club.**



## Program

**April 24-25, May 8-9; June 12-13 (2021)**

### ATA REGISTERED TARGETS

**Event #1, 5 - 100 16 yd Targets/ Sat 9:00 am (Sign up) 10:00 am Start (or earlier if possible) 12:00-Entries May Be Closed**

#### Five Classes -

97% and Over ..... AA

94% and Under 97% ..... A

91% and Under 94% ..... B

88% and Under 91% ..... C

Under 88% ..... D

**Entry Fee ..... \$27**

**ATA+WTA (\$3.00) WTA Fee (\$3.00) Tax Incl. \$6**

**Options - \*\* (Options are NOT Compulsary) \*\***

**Lewis - (Places [1 for 10] - Hi Gun - Ties Divide) ... \$10**

### Event #2, 6 -100 Handicap Targets - Entries Closed w/ Last Flight

**Entry Fee ..... \$27**

**ATA+WTA (If Not Previously Paid) Tax Incl. \$6**

**(3 Yardage Groups (19-21, 21.5 - 24.5, 25-27))**

**Options - \*\* (Options are NOT Compulsary) \*\***

**Lewis - (Places [1 for 10] - Hi Gun - Ties Divide) ... \$10**

**Dave Schael** 50 straight in Handicap on first 50-targets (75% of pot paid out-ties divide) **\$1**

**Name Changer** 50 straight in Handicap on Middle 50-targets (50% of pot paid out-ties divide) **\$5**

### Event #3, 4 - 50 Pair Doubles Targets - Entries Closed 11AM

**Entry Fee ..... \$27**

**ATA+WTA (\$3.00) WTA Fee (\$3.00) Tax Incl. \$6**

**Options - \*\* (Options are NOT Compulsary) \*\***

**Lewis - (Places [1 for 10] - Hi Gun - Ties Divide) \$10**

#### Three Classes -

89% and Over ..... A

83% and Under 89% ..... B

Under 83% ..... C

## WESTON TRAP CLUB

**CASH TROPHIES = \$4 PER ENTRY PAID BACK  
- ONE MONEY EACH CLASS / YARDAGE  
GROUP & CATAGORY (HIGH GUN - TIES  
DIVIDE).**

**Management reserves the right to refuse any entry and  
change or cancel any or all parts of the program.**

**Categories are Vet, Lady & Junior**

**Cash Trophy Awarded to High Over All Each Day and  
High All Around for The Weekend**

**CATAGORY SHOOTERS MAY FALL BACK TO A SINGLE  
CATAGORY. LIMIT ONE TROPHY PER EVENT.**

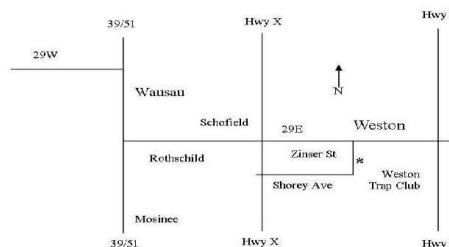
**JUNIORS MAY SHOOT ANY EVENT FOR \$16 IF NOT  
PLAYING OPTIONS AND DECLARED FOR YOUTH PROGRAM  
OR JUNIOR TROPHY ONLY**

**TROPHY TO HIGH AIM SHOOTER OF EACH EVENT**

**ALL AIM MEMBERS AND YOUTH PROGRAM PARTICIPANTS  
WILL QUALIFY FOR AIM TROPHY REGARDLESS OF TARGET  
PRICE PAID.**

**1 CASE OF SHELLS WILL BE AWARDED TO THE FIRST SHOOTER  
REGISTERING 100 STRAIGHT AT ANY REGISTERED HANDICAP  
EVENT.**

Exit State Hwy 29 at County Hwy J.  
Turn South on Hwy J. After 1/8 Mi. Turn Right and Drive  
West on Weston Avenue 1 Mi. Turn South on Zinser St.  
One Mile South to club.



Located East of Wausau along State Hwy 29.  
9105 Zinser Street  
Weston, WI 54476  
715-355-4888

**THERE WILL BE A \$5 CHARGE FOR RE-SQUADING UNLESS  
REQUESTED BY SHOOT MANAGMENT.**

**Contact:: ATA co-chairs Craig (Woody) Wojciechowski 715-  
573-2702 or Russ Slaby 715-571-3443 for information.**